

TOPIC 13

Fieldwork inquiry: Comparing wellbeing in the local area

13.1 Overview

Numerous **videos** and **interactivities** are embedded just where you need them, at the point of learning, in your learnON title at www.jacplus.com.au. They will help you to learn the content and concepts covered in this topic.

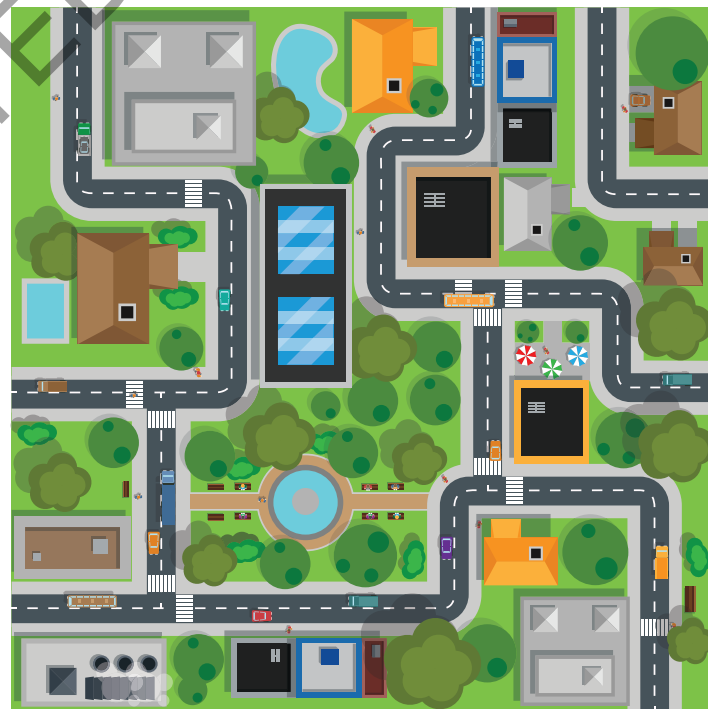
13.1.1 Scenario and your task

You may have noticed that there are distinct variations across space in any city, suburb or regional community in terms of human wellbeing. Your council has asked for locals to inform them about differences in wellbeing they notice within their local areas, and what could or should be done about these in the future. Investigation of the topic will require you to undertake some fieldwork in order to make first-hand observations in the field, collect, process and analyse data.

Your task

Your task is to produce a fieldwork report you could present to your local council that outlines variations within your local area, reasons for the differences and strategies to improve the situation in the future. The aim of the fieldwork is for you to explore some of these variations by comparing two places at the local scale. The key inquiry questions the council wants to know answers to are:

- How does wellbeing vary between area X and area Y in the local area?
- What factors might explain the variations in wellbeing?
- How can wellbeing be improved in the local area?



13.2 Process

13.2.1 Process

- Go to www.jacplus.com.au to access and watch the introductory video lesson for this fieldwork enquiry.

- **Planning:**

1. As a class, discuss the types of indicators you would use as a basis for comparing wellbeing in your local area; for example, surveys. Decide on teams and allocate tasks, or different streets, to each team member. Download the fieldwork planning document from the Resources tab. Use the task list to help you plan your fieldwork.
2. You will need to determine the features of the houses and streets that you wish to gain data about. How will you record this data on the day (per house block or per street block)? Think carefully and plan your data record sheet so it is easy to use and also easy to summarise. Download the sample street analysis template from the Resources tab to help you plan and to record your housing data.
3. If you are planning to survey people, you will need to plan and prepare survey questions. Download the community sample survey template from the Resources tab to help you plan and to record your data.

13.2.2 Collecting and recording data

1. Prior to going on your field trip, prepare a simple map to show the location of your fieldwork site(s) relative to key features such as your school or city centre. You will need a separate location map if your second site is not in the same area.
2. Prepare a more detailed map of your fieldwork site(s). Use a street directory, Google Earth or local council map as a guide. Include streets, street names, schools, preschools, shops and shopping centres, parks, public transport and other community facilities. Complete your map with BOLTSS.
3. During the field trip you may be required to survey houses whereby you record key features, take photographs (*Hint: Keep a record of the location of photographs taken*) and survey local residents in public places such as parks and shopping centres.
4. Download the fieldwork report document from the Resources tab to help you prepare your report.



13.2.3 Analysing your information and data

- An important skill is the ability to analyse the information you have collected on your field trip and any other supplementary data, in order to write the findings of your inquiry into a fieldwork report. A key part of your report is to determine any patterns or trends revealed in the data. At the same time, try to identify any anomalies (variations) from the patterns or trends. Download the analysis document from the Resources tab to help you further analyse the data you have collected.



13.2.4 Communicating your findings

- Formally write your observations as a fieldwork report using these suggested sub-headings:
 - Background and key inquiry question (include location descriptions and map(s))
 - Conducting the fieldwork (planning and collection of data)
 - Findings (results of data analysis)
 - Future (How might wellbeing in the local community be improved upon? What could local councils and other community-based organisations do to improve living conditions? You might like to put forward a proposal to local council outlining your suggestions.)

You may wish to add your own headings.

13.3 Review

13.3.1 Reflecting on your work

- Think about how you approached this fieldwork project and how you, personally, were able to organise yourself and contribute to the working of the team. Access and complete the reflection document in the Resources tab. Be honest in assessing your strengths and areas where you think you could do better next time.
- Submit your reflection document along with your completed fieldwork report.